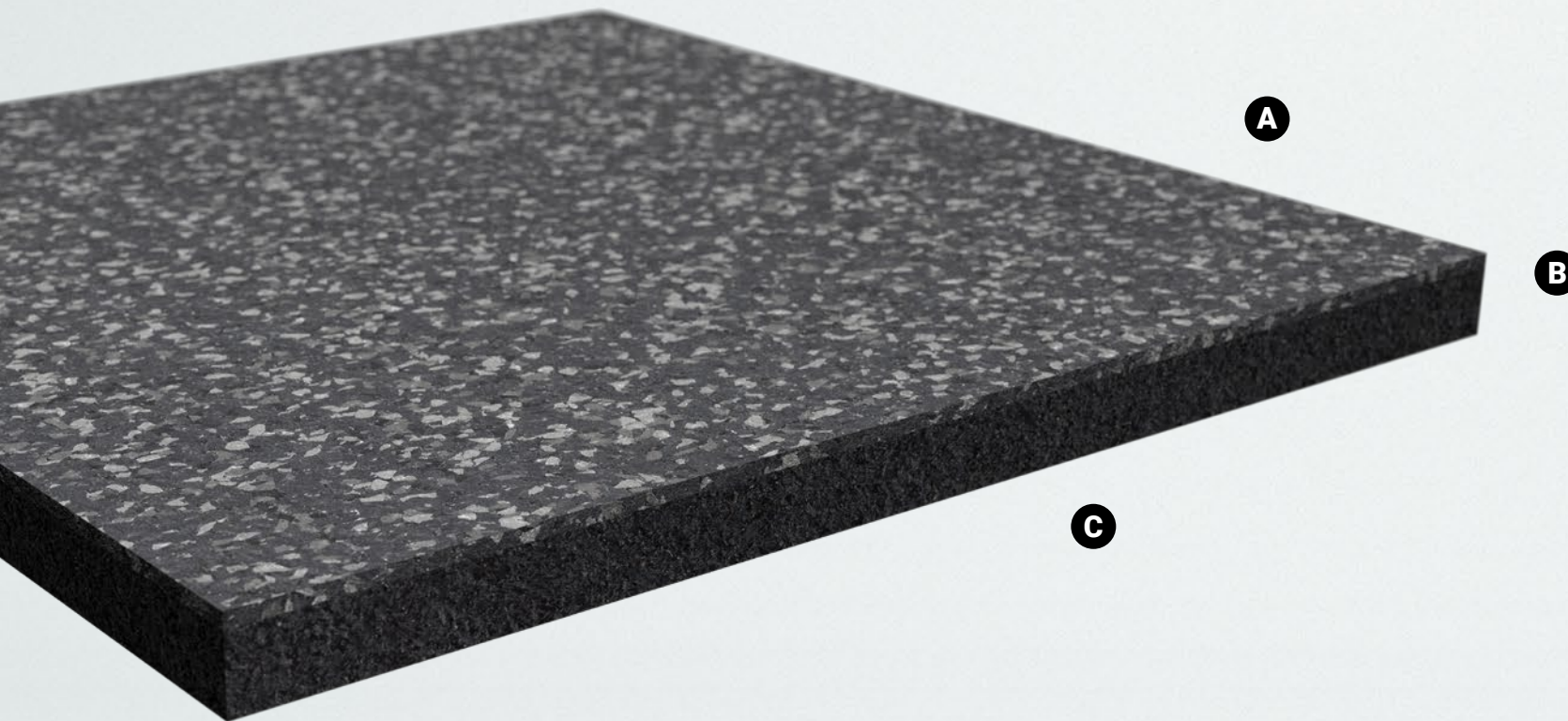


Achieve

Dual layer rubber



CHARACTERISTICS

- A.** Achieve's 3mm top layer delivers solid-grip technology, indentation resistance and boosted color retention.
- B.** Achieve's patented fusion process creates an unbreakable seal, combining the system's dual layers into a premier surface that will not separate or weaken over time.
- C.** Developed alongside respected strength coaches around the world, Achieve's highly aggressive Plaetech™ foundation layer absorbs maximum shock on impact, diminishing barbell bounce and easing joint stress while simultaneously delivering ideal energy return levels for safer training.

APPLICATIONS

Achieve's performance characteristics are highlighted in weight room applications. Other uses include athletic and military training facilities, fitness centers, locker rooms, etc.

WARRANTY

PLAE warrants that Achieve, when installed using recommended procedures and adhesives, shall be free of manufacturing defects under normal use for 15 years from the date of its original installation. Please see Achieve's warranty for details.

Achieve

Dual layer rubber

Available in three thicknesses, Achieve's dual layers are fused together by a patented process that will not separate or weaken. Our innovative underlayment delivers maximum shock absorption and explosive energy return, providing a unique balance designed to optimize both safety and performance.

PHYSICAL CHARACTERISTICS

Surface: Smooth, seamless, solid-grip

Thickness: 8mm, 13mm, 18mm

Wear Layer: 3mm

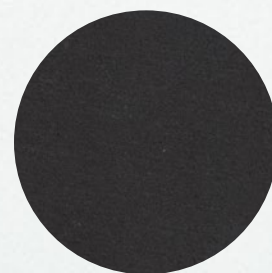
Underlayment: 5mm, 10mm, 15mm

Weight per Area: 1.5, 2.7, 4.1 lbs/sq. foot

Roll Length: 8mm - 50', 13mm - 35', 18mm - 25'

Roll Width: 4'

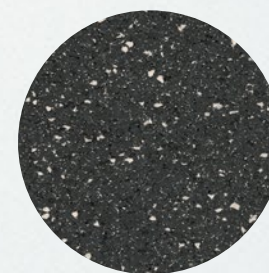
PLAE



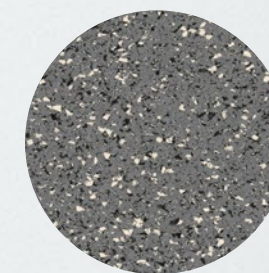
001 **Black**



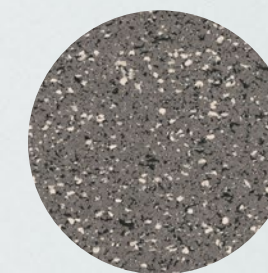
D100 **Apollo Black**



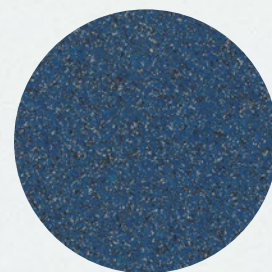
D951 **Lunar Charcoal**



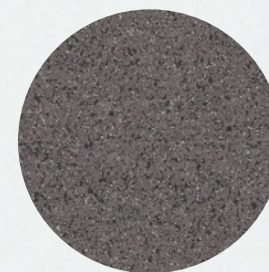
D952 **Artemis Gray**



D953 **Eagle Greige**



900 **Blue**



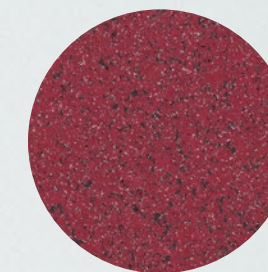
903 **Taupe**



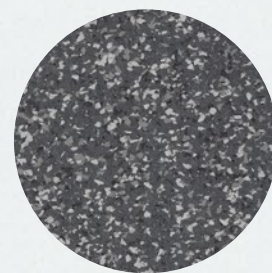
905 **Charcoal**



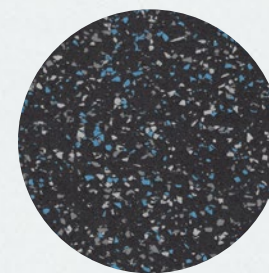
906 **Espresso**



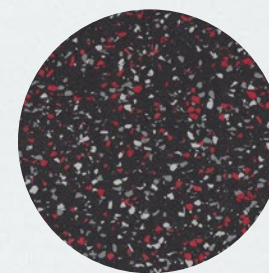
909 **Red**



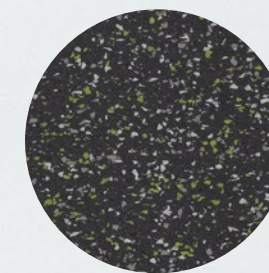
910 **Modern Gray**



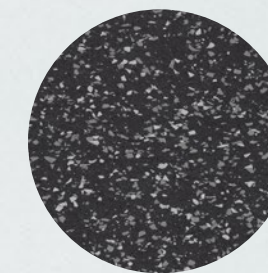
303 **Blue Gray**



304 **Red Gray**



307 **Green Gray**



308 **Gray**