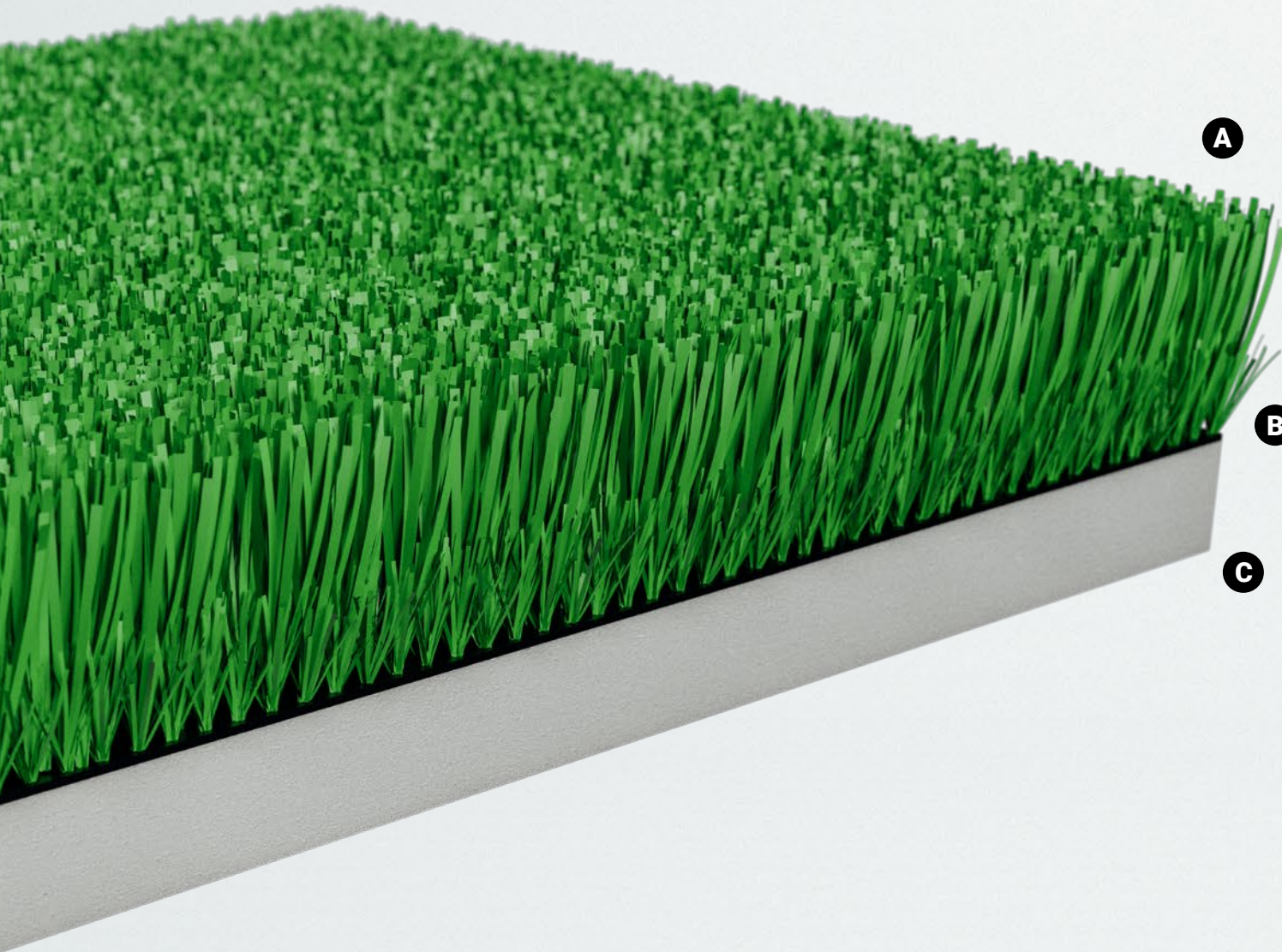


Blitz

Performance agility turf



PLAE

CHARACTERISTICS

A. Blitz's polyethylene monofilament stalk fibers provide a natural aesthetic and comfortable feel compared to other fibers. Smooth sled push, slip resistance and various color options combine to provide a world-class synthetic grass system capable of dynamic branding and water jet logo compositing.

B. At its base is Blitz's texturized nylon thatch layer, which provides overall system stability and strength.

C. Blitz comes fused to a high grade pliable polyurethane 5mm foam pad designed to absorb shock and return energy for safe, natural movement. The strong bond between the fiber backing and open cell foam pad prevent separation and breakdown over time.

APPLICATIONS

Blitz's characteristics are highlighted in an indoor training setting, but it also offers an excellent solution for indoor/outdoor athletic fields and multi-purpose recreational areas.

WARRANTY

PLAE warrants that Blitz, when installed using recommended procedures and adhesives, shall be free of manufacturing defects under normal use for 8 years from the date of installation. Please see Blitz's warranty for details.

Blitz

Performance agility turf

Blitz combines polyethylene and texturized nylon fibers for a system that is both comfortable and tough enough to stand up to the most demanding of tasks. Fusing that to a top-tier energy layer and you've got a system that can be glued to almost any surface to provide a high-performance turf that leads the industry in both durability and safety.

PHYSICAL CHARACTERISTICS

Surface: Polyethylene pile, texturized nylon Thatch

Thickness: Approx. 22.5mm

Pile: 11/16 in | 17.5mm

Foam Backing: 5mm

Face Weight: 48oz

Roll Length: Custom

Roll Width: 15'

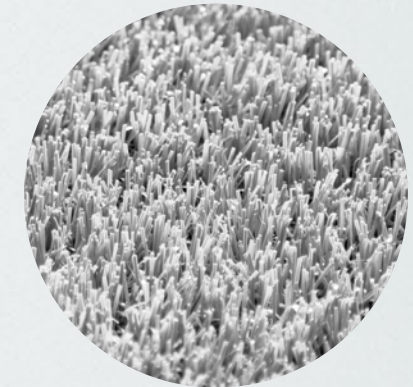
PLAE



Black



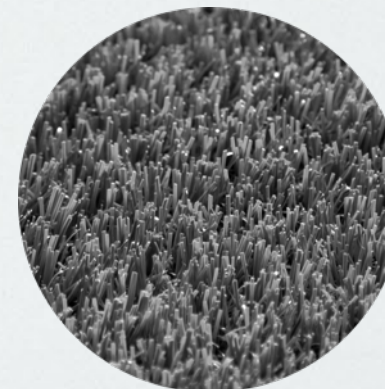
Green



White



Blue



Silver